

ELECTRIC CURRENT AND MAGNETISM BASED GENERAL SCIENCE MCQ PRACTICE QUESTIONS AND ANSWERS PDF WITH EXPLANATION

For All Competitive SSC, Bank, IBPS, UPSC, Railway, IT & Other Govt. Exams

Created By [Careericons](#) Team

Q1. When light waves travel from air to glass, which variables are affected?

- a) Wavelength and frequency only
 - b) Wavelength, frequency and velocity
 - c) Velocity and frequency only
 - d) Wavelength and velocity only
-

Q2. What is the phenomenon of the moon to appear bigger in size as it approaches the horizon, called ?

- a) Scattering of light
 - b) Atmospheric refraction of light
 - c) Diffraction of light
 - d) Total internal reflection of light by water vapours
-

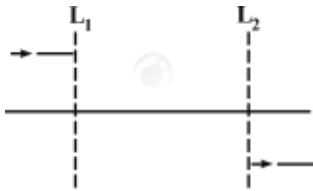
Q3. A refracting telescope consists of

- a) two concave mirrors of different focal lengths
 - b) one concave mirror and one convex lens
 - c) two convex lenses of equal focal length
 - d) two convex lenses of unequal focal lengths
-

Q4. In the figure shown below, L_1 and L_2 are two lenses and are kept along the same axis. A parallel beam of light falling on L_1 leaves L_2 as a parallel beam: Consider the following statements.

- Both L_1 and L_2 can be convex lenses.
- The distance between the two lenses can be equal to sum of their focal lengths.

Which of the statements given above is/are correct ?



- a) Both 1 and 2
- b) Only 1
- c) Only 2
- d) Neither 1 nor 2

5000+ FREE GENERAL SCIENCE MCQ QUESTION BANK FOR ALL SSC, UPSC, BANK, RAILWAY EXAMS

[Free Practice MCQs »](#)

[Download More PDF »](#)

[Free Online Quiz »](#)

Q5. In electric apparatus 'Earth' is used

- a) For safety
- b) To reduce the expenditure
- c) Because the apparatus used 3-phase
- d) In the form of fuse

Q6. An electric bulb is connected to 220 V generator. The current is 0.5A. The power of the bulb is

- a) 440 W
- b) 110 W
- c) 110 V
- d) 220 W

Q7. Fluorescent tubes are fitted with a choke. The choke coil

- a) Reduces current in the circuit

- b) Steps up the line voltage
 - c) Steps down the line voltage
 - d) Chokes low frequency current
-

Q8. A mobile phone charger is

- a) A step up transformer
 - b) An inverter
 - c) A UPS
 - d) A step down transformer
-

Q9. Carbon, silicon and germanium have four valence electrons each. These are characterised by valence and conduction bands separated by energy band gap respectively equal to $(E_g)_C$, $(E_g)_{Si}$ and $(E_g)_{Ge}$. Which of the following statements is true?

- a) $(E_g)_C < (E_g)_{Ge} < (E_g)_{Si}$
 - b) $(E_g)_C > (E_g)_{Si} > (E_g)_{Ge}$
 - c) $(E_g)_{Si} < (E_g)_{Ge} < (E_g)_C$
 - d) $(E_g)_C = (E_g)_{Si} = (E_g)_{Ge}$
-

Q10. An oscillator is nothing but an amplifier with

- a) negative feedback
 - b) large gain
 - c) positive feedback
 - d) no feedback
-

Q11. An alternating current can be converted into direct current by a

- a) transformer
- b) dynamo

- c) rectifier
 - d) motor
-

Q12. The energy band gap is minimum in

- a) superconductors
- b) insulators
- c) metals
- d) semiconductors.

1000+ FREE ELECTRIC CURRENT AND MAGNETISM BASED QUESTIONS AND ANSWERS FOR ALL COMPETITIVE EXAMS

[Free Practice MCQs »](#)

[Download More PDF »](#)

[Free Online Quiz »](#)

Q13. In an electric motor, conversion takes place of

- a) electrical energy into mechanical energy
 - b) electrical energy into light energy
 - c) chemical energy into electrical energy
 - d) electrical energy into chemical energy
-

Q14. The filament of a halogen lamp is an alloy of

- a) Tungsten and sodium
 - b) Tungsten and iodine
 - c) Tungsten and bromine
 - d) Molybdenum and sodium
-

Q15. Match list-I with list -II:

List I	List II
---------------	----------------

A. Resistance of resistance box	1. Tungsten
B. Fuse wire	2. Maganin
C. Bulb	3. Tin-lead alloy
D. Insulator	4. Glass

Select the correct answer using the codes given below the lists:

- a) A – 4 ; B – 3 ; C – 2 ; D – 1
b) A – 3 ; B – 1 ; C – 2 ; D – 4
c) A – 4 ; B – 2 ; C – 3 ; D – 1
d) A – 2 ; B – 3 ; C – 1 ; D – 4

[Read More physics gk Question and Answers »](#)

Answers to the above questions :

Q1. Answer: (d)

Q2. Answer: (b)

Q3. Answer: (d)

5000+ GENERAL SCIENCE MCQ TOPIC WISE MCQ QUESTION BANK WITH SOLVED ANSWERS & FREE PDF

[MEASUREMENT AND SI UNITS](#)

[MEASURING DEVICES AND SCALES](#)

[MECHANICS \(MASS, FORCE, ACCELERATION, WORK, ENERGY, MOMENTUM, VELOCITY\)](#)

[FORCE OF GRAVITY, SOLIDS AND FLUIDS](#)

[MOTION UNDER GRAVITY](#)

[PHYSICAL PROPERTIES OF MATERIALS](#)

[LIGHT, HEAT, THERMODYNAMICS, WAVE MOTION, SOUND, OPTICS & OSCILLATIONS](#)

ELECTRIC CURRENT AND MAGNETISM NUCLEAR PHYSICS AND CONDUCTIVITY

MODERN AND SPACE PHYSICS, SOURCES OF ENERGY

GENERAL CONCEPTS OF CHEMISTRY NATURE OF MATTER AND COMPOSITION

ATOMIC STRUCTURE MOLECULES AND NUCLEAR CHEMISTRY

CLASSIFICATION OF ELEMENTS, CHEMICAL BONDING, PERIODICITY IN PROPERTIES &
PHYSICAL TRANSFORMATION

METALS, NON METALS, MINERALS, ORES, PROPERTIES, USES

ALLOYS, CARBON & ITS VARIOUS FORMS, HYDROGEN & COMPOUNDS, SULPHUR,
NITROGEN, HALOGEN & INERT GASES

ACIDS, BASES, SALTS AND METALS

HYDROCARBON, ALCOHOL, POLYMER, ORGANIC ACID AND EXPLOSIVE SUBSTANCE

FUEL, FOOD PRESERVATION, NUTRITION, MEDICINE, DETERGENTS AND FERTILIZERS

INORGANIC CHEMISTRY ORGANIC CHEMISTRY ENVIRONMENTAL CHEMISTRY

SOME IMPORTANT MAN MADE MATERIALS SUB DIVISIONS OF BIOLOGY

GENETICS, EVOLUTION OF LIFE & ECOLOGICAL BIODIVERSITY TAXONOMY

HEREDITY BIOFERTILIZER

BIOLOGICAL CLASSIFICATION CELL TISSUES AND DIVISION HUMAN ANATOMY

BLOOD TRANSPORT SYSTEM DIGESTION AND EXCRETION PHOTOSYNTHESIS

VITAMINS, NUTRITION, HEALTH, DISEASE AND TREATMENT

ENDOCRINE GLANDS, HORMONES

PHYSIOLOGY OF PLANTS, HUMANS AND ANIMALS REPRODUCTION

FOOD PRODUCTION BIOLOGY IN HUMAN WELFARE

ECOLOGY AND ENVIRONMENT AWARENESS

GENETIC ENGINEERING AND BIO TECHNOLOGY

Q4. Answer: (a)

Q5. Answer: (a)

Q6. Answer: (b)

Q7. Answer: (b)

Q8. Answer: (d)

Q9. Answer: (b)

Q10. Answer: (c)

A positive feedback from output to input in an amplifier provides oscillations of constant amplitude.

Q11. Answer: (c)

Q12. Answer: (c)

Maximum in insulators and minimum in metals.

Q13. Answer: (a)

Q14. Answer: (a)

Q15. Answer: (d)

A ? 2; B ? 3; C ? 1; D ? 4

- Manganin is used in resistance boxes.
- Fuse wire is made up of Tin-lead alloy. It's resistance is very high and melting point is very low.
- Filament of bulb is made up of Tungsten.
- Glass is insulator of electricity.

On our site **Careerions.com**, You can find all the content you need to prepare for any kind of exam like. **Verbal Reasoning, Non-Verbal Reasoning, Aptitude, English, Computer, History, Polity, Economy, Geography, General Science, General Awareness & So on.** Make use of our expert-curated content to get an edge over your competition and prepare for your exams effectively.

Practice with our **Free Practice MCQs, Mock Tests Series, Online Quiz** and get an idea of the real exam environment. Keep track of your progress with our detailed performance reports. They are perfect for competitive exam preparation, as well as for brushing up on basic & fundamental knowledge. The questions are updated regularly to keep up with the changing syllabuses.