

LIGHT, HEAT, THERMODYNAMICS, WAVE MOTION, SOUND, OPTICS & OSCILLATIONS BASED GENERAL SCIENCE MCQ PRACTICE QUESTIONS AND ANSWERS PDF WITH EXPLANATION

For All Competitive SSC, Bank, IBPS, UPSC, Railway, IT & Other Govt. Exams

Created By [Careericons](#) Team

Q1. Which of the following represents convection ?

- a) Heating water by keeping the vessel on a flame
 - b) Land breeze
 - c) Exhaust fan
 - d) All of these
-

Q2. Sky is blue because

- a) Blue colour is more absorbing to eyes
 - b) Short waves are scattered more than long waves by atmosphere
 - c) Blue colour in the Sunlight is more than other colours
 - d) Atmosphere absorbs long wavelength more than short wavelength
-

Q3. If the temperature of air increases, how would it affect its ability to assume water vapour?

- a) Increase
 - b) Firstly decrease, then again increase
 - c) Decrease
 - d) Remains constant
-

Q4. A vibrating body

- a) will produce sound which depends upon frequency

- b) will always produce sound
- c) may or may not produce sound if the amplitude of vibration is low
- d) None of these

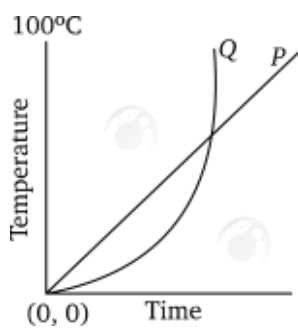
5000+ FREE GENERAL SCIENCE MCQ QUESTION BANK FOR ALL SSC, UPSC, BANK, RAILWAY EXAMS

[Free Practice MCQs »](#)

[Download More PDF »](#)

[Free Online Quiz »](#)

Q5. The variations in temperature from 0°C to 100°C with respect to time of two liquids P, Q are shown in the graph given below. Which of the following statement is correct?



- a) At no point of time during heating did the two liquids have the same temperature
- b) P attained the temperature of 100°C faster than Q
- c) During heating, liquid P has always warmer than Q
- d) Q attained the temperature of 100°C faster than P

Q6. Assertion (A):

Woollen clothes keeps us warm.

Reason (R):

Woollen fibres are made from a special type of protein, which is a bad conductor of heat.

Select the correct answer from the codes given below.

- a) Both (A) and (R) are true, but (R) is not the correct explanation of (A)
- b) (A) is true, but (R) is false
- c) Both (A) and (R) are true and (R) is the correct explanation of (A)
- d) (A) is false, but (R) is true

Q7. For which wavelength of light is our eye most sensitive

- a) 200 nm
 - b) 3.00 nm
 - c) 555 nm
 - d) 800 nm
-

Q8. If a gas is compressed to half of its original volume at 27°C , to what temperature should it be heated to make it occupy its original volume?

- a) 600°C
 - b) 54°C
 - c) 327°C
 - d) 300°C
-

Q9. Woollen clothes are used in winter season because woollen clothes

- a) are bad conductors of heat
 - b) are good sources for producing heat
 - c) absorb heat from surroundings
 - d) provide heat to body continuously
-

Q10. In which medium the speed of sound is maximum at a temperature of around 20°C ?

- a) Granite
 - b) Water
 - c) Air
 - d) Iron
-

Q11. Air conditioner is based on the principle of

- a) first law of thermodynamics
 - b) Carnot cycle
 - c) refrigerator
 - d) None of these
-

Q12. A man standing between two parallel hills fires a gun and hears two echoes, one 2.5 s and the other 3.5 s after the firing. If the velocity of sound is 330 m s^{-1} , how long will it take him to hear the third echo?

- a) 5 s
- b) 4 s
- c) 6s
- d) 8s

1000+ FREE LIGHT, HEAT, THERMODYNAMICS, WAVE MOTION, SOUND, OPTICS & OSCILLATIONS BASED QUESTIONS AND ANSWERS FOR ALL COMPETITIVE EXAMS

[Free Practice MCQs »](#)

[Download More PDF »](#)

[Free Online Quiz »](#)

Q13. The ratio of the speed of a body to the speed of sound is called

- a) Mach number
 - b) Sonic index
 - c) Doppler ratio
 - d) Refractive index
-

Q14. Assertion (A):

Radio waves bend in a magnetic field.

Reason (R):

Radio waves are electromagnetic in nature.

- a) Both A and R are true but R is not a correct explanation of A
- b) Both A and R are true and R is the correct explanation of A
- c) A is true but R is false

d) A is false but R is true

Q15. Which zone of a candle flame is the hottest ?

- a) Outermost zone
- b) Dark innermost zone
- c) Middle luminous zone
- d) Central zone

[Read More light heat thermodynamics wave sound optics oscillation Question and Answers »](#)

Answers to the above questions :

Q1. Answer: (d)

All the given phenomena are caused due to convection

Q2. Answer: (b)

Q3. Answer: (a)

5000+ GENERAL SCIENCE MCQ TOPIC WISE MCQ QUESTION BANK WITH SOLVED ANSWERS & FREE PDF

[MEASUREMENT AND SI UNITS](#)

[MEASURING DEVICES AND SCALES](#)

[MECHANICS \(MASS, FORCE, ACCELERATION, WORK, ENERGY, MOMENTUM, VELOCITY\)](#)

[FORCE OF GRAVITY, SOLIDS AND FLUIDS](#)

[MOTION UNDER GRAVITY](#)

[PHYSICAL PROPERTIES OF MATERIALS](#)

[LIGHT, HEAT, THERMODYNAMICS, WAVE MOTION, SOUND, OPTICS & OSCILLATIONS](#)

ELECTRIC CURRENT AND MAGNETISM NUCLEAR PHYSICS AND CONDUCTIVITY

MODERN AND SPACE PHYSICS, SOURCES OF ENERGY

GENERAL CONCEPTS OF CHEMISTRY NATURE OF MATTER AND COMPOSITION

ATOMIC STRUCTURE MOLECULES AND NUCLEAR CHEMISTRY

CLASSIFICATION OF ELEMENTS, CHEMICAL BONDING, PERIODICITY IN PROPERTIES &
PHYSICAL TRANSFORMATION

METALS, NON METALS, MINERALS, ORES, PROPERTIES, USES

ALLOYS, CARBON & ITS VARIOUS FORMS, HYDROGEN & COMPOUNDS, SULPHUR,
NITROGEN, HALOGEN & INERT GASES

ACIDS, BASES, SALTS AND METALS

HYDROCARBON, ALCOHOL, POLYMER, ORGANIC ACID AND EXPLOSIVE SUBSTANCE

FUEL, FOOD PRESERVATION, NUTRITION, MEDICINE, DETERGENTS AND FERTILIZERS

INORGANIC CHEMISTRY ORGANIC CHEMISTRY ENVIRONMENTAL CHEMISTRY

SOME IMPORTANT MAN MADE MATERIALS SUB DIVISIONS OF BIOLOGY

GENETICS, EVOLUTION OF LIFE & ECOLOGICAL BIODIVERSITY TAXONOMY

HEREDITY BIOFERTILIZER

BIOLOGICAL CLASSIFICATION CELL TISSUES AND DIVISION HUMAN ANATOMY

BLOOD TRANSPORT SYSTEM DIGESTION AND EXCRETION PHOTOSYNTHESIS

VITAMINS, NUTRITION, HEALTH, DISEASE AND TREATMENT

ENDOCRINE GLANDS, HORMONES

PHYSIOLOGY OF PLANTS, HUMANS AND ANIMALS REPRODUCTION

FOOD PRODUCTION BIOLOGY IN HUMAN WELFARE

ECOLOGY AND ENVIRONMENT AWARENESS

GENETIC ENGINEERING AND BIO TECHNOLOGY

Q4. Answer: (a)

Q5. Answer: (d)

Q6. Answer: (b)

Q7. Answer: (c)

Our eye can see wavelength of light range 4000\AA to 7800\AA

Q8. Answer: (c)

Q9. Answer: (a)

In winter, the temperature of the surroundings is low compared to the body temperature (37.4°C).

Since woollen clothes are bad conductors of heat, so they keep the body warm.

Q10. Answer: (d)

Q11. Answer: (c)

Q12. Answer: (c)

Q13. Answer: (a)

Q14. Answer: (d)

Q15. Answer: (a)

On our site **Careerions.com**, You can find all the content you need to prepare for any kind of exam like. **Verbal Reasoning, Non-Verbal Reasoning, Aptitude, English, Computer, History, Polity, Economy, Geography, General Science, General Awareness & So on.** Make use of our expert-curated content to get an edge over your competition and prepare for your exams effectively.

Practice with our **Free Practice MCQs, Mock Tests Series, Online Quiz** and get an idea of the real exam environment. Keep track of your progress with our detailed performance reports. They are perfect for competitive exam preparation, as well as for brushing up on basic & fundamental knowledge. The questions are updated regularly to keep up with the changing syllabuses.

Careerions.com